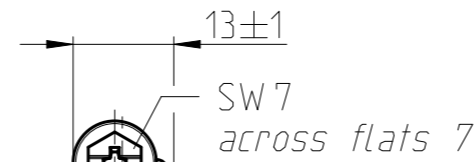
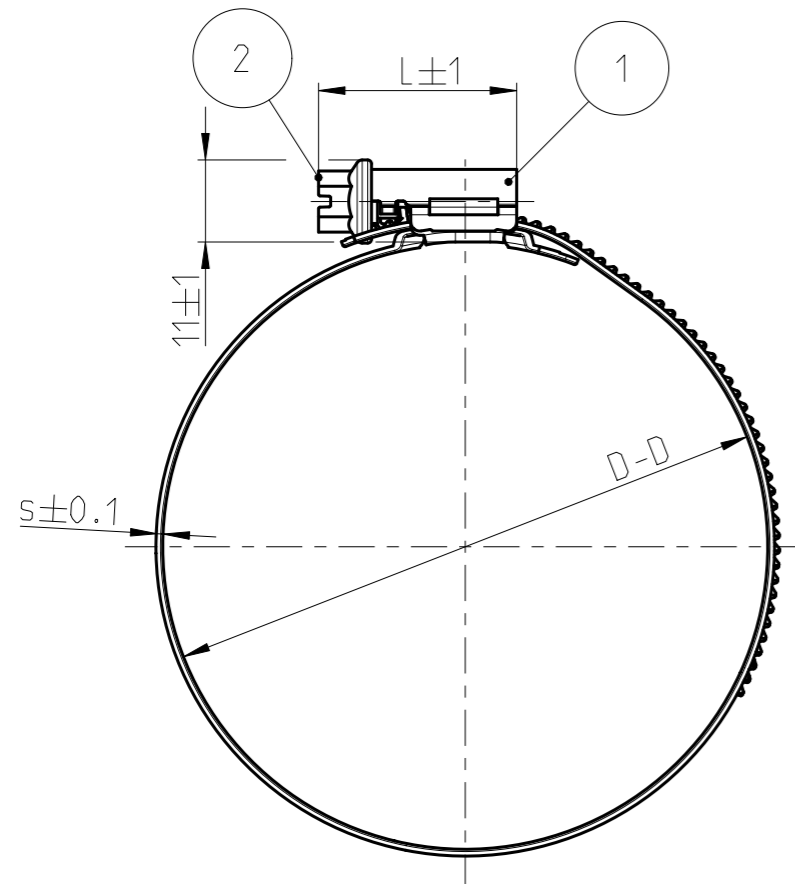
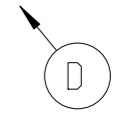
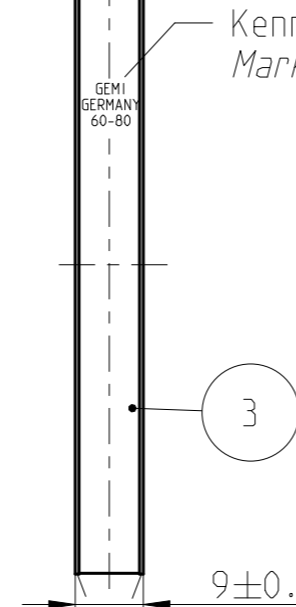


QUOTATION DRAWING

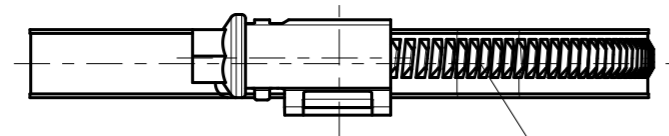
Teil-Nr. ITEM-NO.	Stueck QTY.	Benennung PART - NAME	Werkstoff MATERIAL	Oberflaeche SURFACE
1	1	TORRO Gehaeuse 9 TORRO Housing 9	DC 03 C590 DC 03 C590	siehe Text See notes
2	1	TORRO Schraube 9 TORRO Screw 9	1.1132 / 1.5525 AISI 1015 / -	
3	1	TORRO Band 9 TORRO Band 9	CP CP	



Kennzeichnung (Beispiel)
Marking (example)



Bandkanten geboerdelt
band edges rounded



Bandpraegung asymmetrisch
asymmetrical band stamp

Empfohlenes Andrehmoment

L21 - 2.5^{+0.5} Nm
L24/26 - 3^{+0.5} Nm
L21 - 2.5^{+0.5} Nm
L24/26 - 3^{+0.5} Nm

Recommended tightening torque

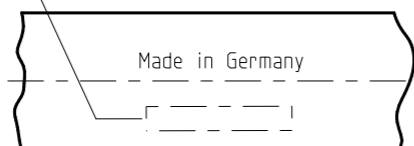
Empfohlene Einschraubgeschwindigkeit
Recommended tightening speed

max. 350 1/min
max. 350 1/min

Oberflaeche: Teil 1 (Gehaeuse) und Teil 2 (Schraube)
verzinkt 8µm, passiviert und versiegelt nach BN 176
Teil 3 (Band) ZA 185 BC

Surface: Part 1 (Housing) and Part 2 (Screw)
zinc plated 8µm, passivated and sealed acc. to BN 176
Part 3 (Band) ZA 185 BC

NORMA Herstellercode auf Bandinnenseite
NORMA BATCH CODE BAND INSIDE



GENERAL TOLERANCE:	DIN 6930-2-m
FORM AND POS. TOL.:	DIN ISO 2768-K
DEVIATION FOR ANGLE:	-

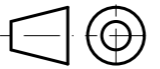

-	-	-	-	-	-	-	-	
-	-	-	-	-	-	-	-	
-	D	1	Material for band corrected was DPF	01-614586	2019-01-21	Lantsmann	Krueger	
-	C	-	drawing in 3D	01-613785	2017-03-04	Lantsmann	Krueger	
INDEX PART	DWG	QTY	REVISION SUMMARY		CHANGE-NO	DATE	DRAWN	CHECKED
1st ANGLE PROJECTION	ACCORDING TO: DIN EN ISO 1101		PART NAME:		NORMACLAMP SX-T D-D/9 A/F 7 W1			
	SCALE:	DATE: YYYY-MM-DD	NAME					
	1:1	2006-02-07	Krauss					
	MM	2006-02-07	Redemann					
PROJECT-NO.:	NORMA Germany GmbH		CUSTOMER:		CUSTOMER-NO.:			
9900001427	Postfach 1149 63461 Maintal		-		-			
CAD-SYSTEM:	(C) COPYRIGHT NORMA GROUP		NORMA-NO.:		INDEX	TYPE	FORMAT	SHEET
Creo 3.0 M140	DIN ISO 16016		0126 0328 000		PART D	Q	A3	1/2
DRAWING-NAME.: 01260328000_Q								

QUOTATION DRAWING

Pos.	L±1	s±0.1	D-D	Anliefer- $\varnothing+2$ SHIPPING- $\varnothing+2$	Benennung PART - NAME	Teilenummer PART - NO.
1	21	0.80	8-12	12	SX-T 8-12/9 A/F 7 W1	0126 0328 010
2	21	0.80	10-16	16	SX-T 10-16/9 A/F 7 W1	0126 0328 013
3	24	0.80	12-20	20	SX-T 12-20/9 A/F 7 W1	0126 0328 016
4	24	0.80	12-22	22	SX-T 12-22/9 A/F 7 W1	0126 0328 017
5	24	0.80	16-25	25	SX-T 16-25/9 A/F 7 W1	0126 0328 020
6	24	0.80	16-27	27	SX-T 16-27/9 A/F 7 W1	0126 0328 021
7	24	0.80	20-32	32	SX-T 20-32/9 A/F 7 W1	0126 0328 026
8	24	0.80	23-35	35	SX-T 23-35/9 A/F 7 W1	0126 0328 029
9	26	0.80	25-40	40	SX-T 25-40/9 A/F 7 W1	0126 0328 032
10	26	0.80	30-45	45	SX-T 30-45/9 A/F 7 W1	0126 0328 037
11	26	0.80	32-50	50	SX-T 32-50/9 A/F 7 W1	0126 0328 041
12	26	0.80	40-60	60	SX-T 40-60/9 A/F 7 W1	0126 0328 050
13	26	0.80	50-70	70	SX-T 50-70/9 A/F 7 W1	0126 0328 060
14	26	0.80	60-80	80	SX-T 60-80/9 A/F 7 W1	0126 0328 070
15	26	0.80	70-90	90	SX-T 70-90/9 A/F 7 W1	0126 0328 080
16	26	0.80	80-100	100	SX-T 80-100/9 A/F 7 W1	0126 0328 090
17	26	0.80	90-110	110	SX-T 90-110/9 A/F 7 W1	0126 0328 100
18	26	0.80	100-120	120	SX-T 100-120/9 A/F 7 W1	0126 0328 110
19	26	0.80	110-130	130	SX-T 110-130/9 A/F 7 W1	0126 0328 120
20	26	0.80	120-140	140	SX-T 120-140/9 A/F 7 W1	0126 0328 130
21	26	0.80	130-150	150	SX-T 130-150/9 A/F 7 W1	0126 0328 140
22	26	0.80	140-160	160	SX-T 140-160/9 A/F 7 W1	0126 0328 150
23	26	0.80	150-170	170	SX-T 150-170/9 A/F 7 W1	0126 0328 160
24	26	0.80	160-180	180	SX-T 160-180/9 A/F 7 W1	0126 0328 170
25	26	0.80	170-190	190	SX-T 170-190/9 A/F 7 W1	0126 0328 180
* 26	26	0.80	180-200	200	SX-T 180-200/9 A/F 7 W1	0126 0328 190

Schellen ab \varnothing 290-310 werden gestreckt geliefert !
clamps from \varnothing 290-310 will be delivered straight !

- * Keine Endgroesse - weitere Abmessungen bis Spannbereich 680-700
in Abstufung von 10mm
- * *no end size - further sizes to clamping rang 680-700
in steps of 10mm*

	ACCORDING TO: DIN EN ISO 1101			PART NAME:					
	SCALE:	DATE: YYYY-MM-DD	NAME	NORMACLAMP SX-T D-D/9 A/F 7 W1					
	1:1 MM	DRAWN 2006-02-07	Krauss						
PROJECT-NO.: 9900001427		NORMA Germany GmbH Postfach 1149 63461 Maintal				CUSTOMER:	CUSTOMER-NO:		
CAD-SYSTEM: Creo 3.0 M140		(C) COPYRIGHT NORMA GROUP DIN ISO 16016		NORMA-NO.: 0126 0328 000		INDEX PART DWG	TYPE Q	FORMAT A3	SHEET 2/2
DRAWING-NAME.: 01260328000_Q									