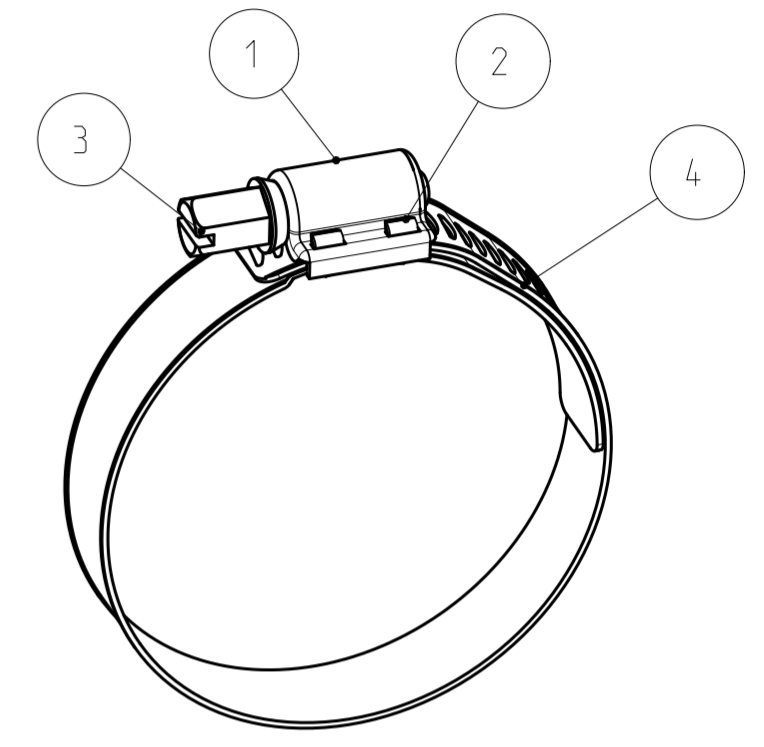
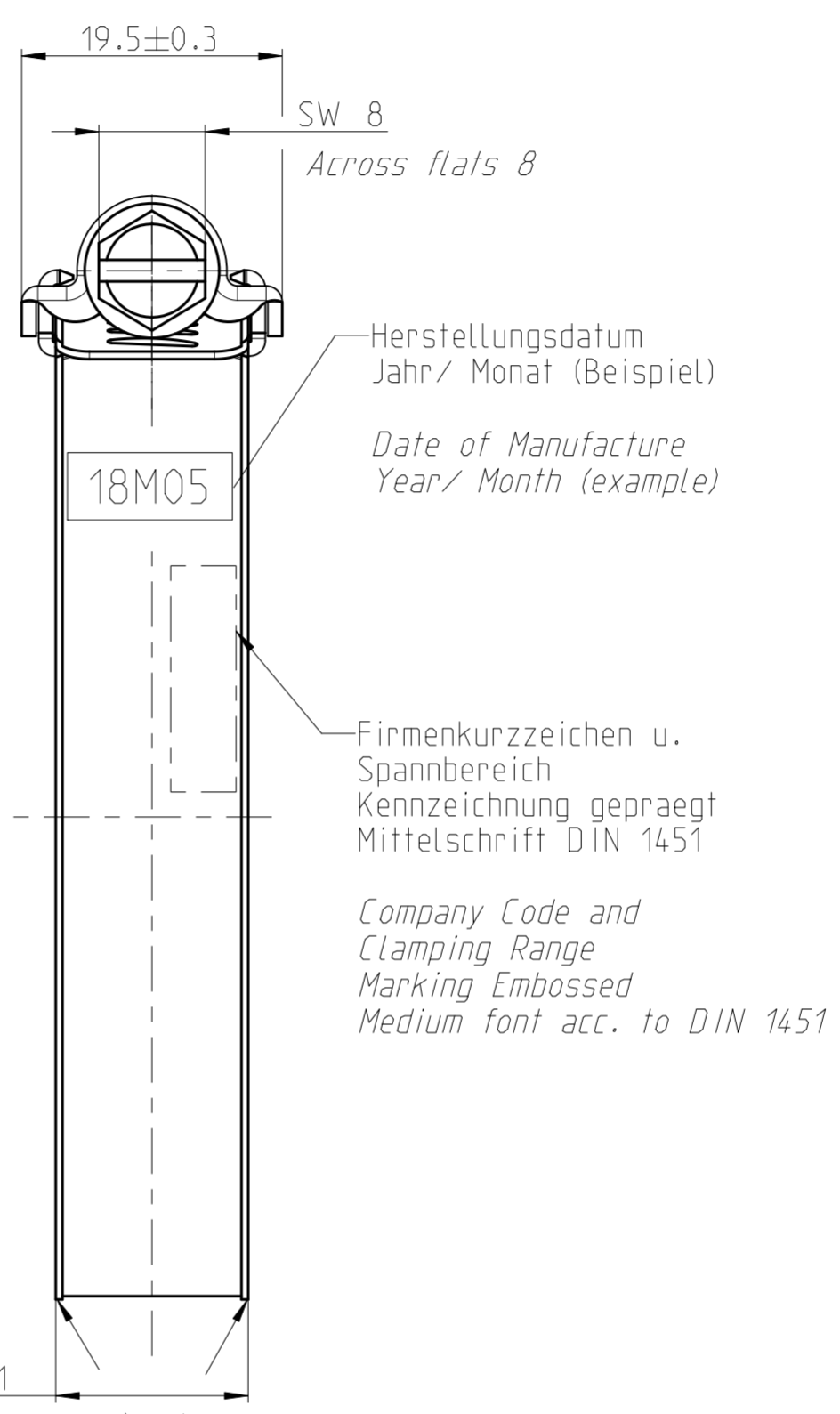
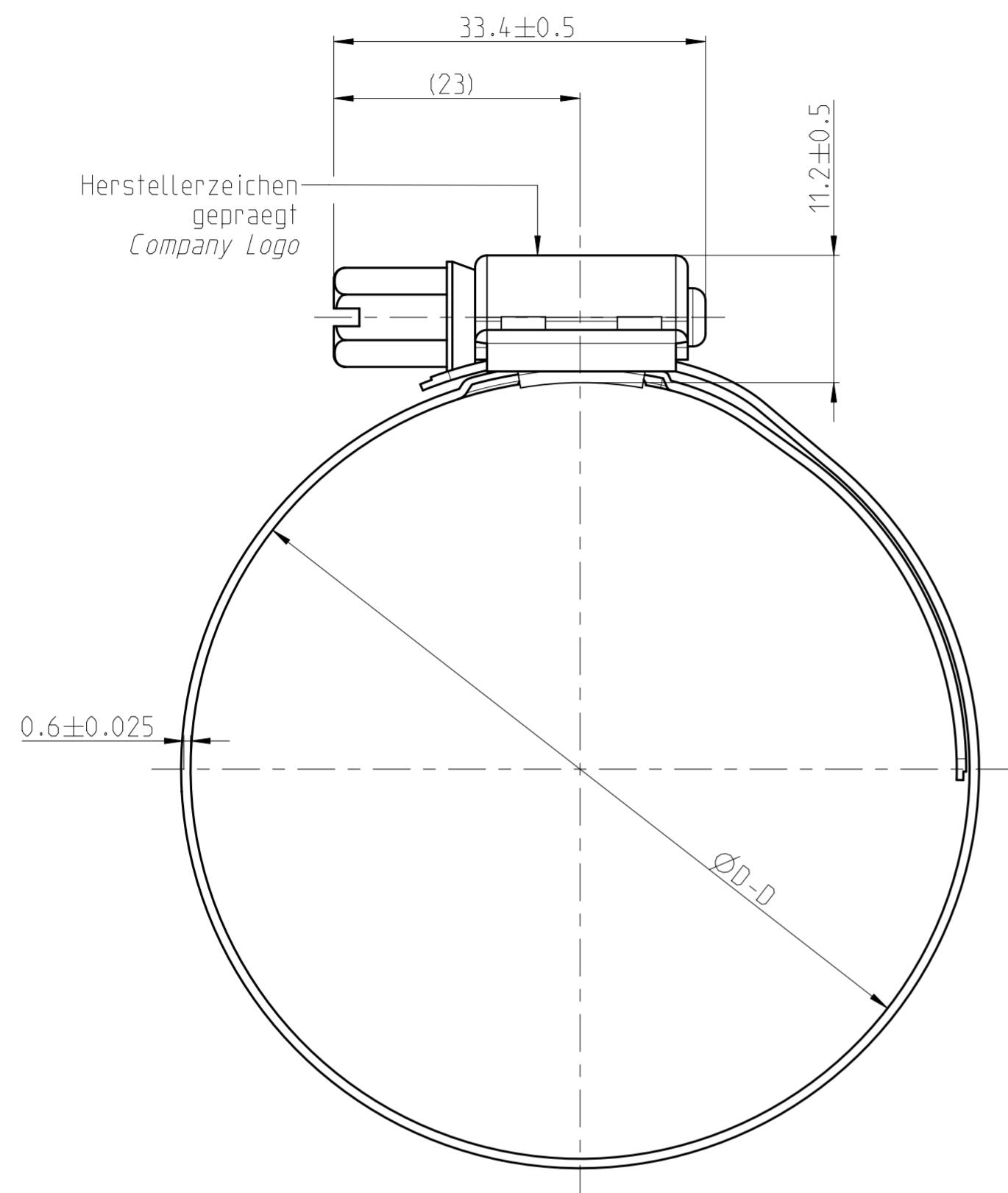


QUOTATION DRAWING

Teil-Nr. ITEM-NO.	Stueck QTY.	Benennung PART - NAME	Werkstoff MATERIAL	Oberflaeche SURFACE
1	1	Gehaeuse Housing	1.4310 AISI 301	blank uncoated
2	1	Sattel Saddle	1.4310 AISI 301	blank uncoated
3	1	Schraube Screw	C1018 /C1022 C1018 /C1022	siehe Text see notes
4	1	Band Band	1.4310 AISI 301	blank uncoated



1:1

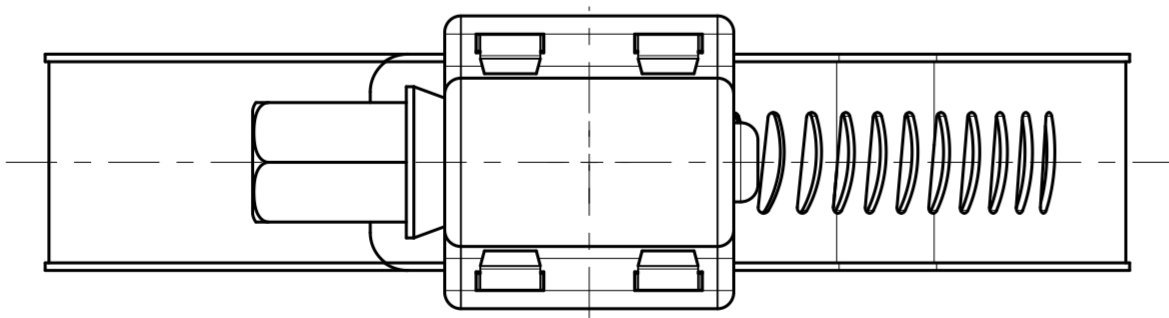
Bandkanten hochgepraegt 0.1-0.3 mm
Band edges rounded 0.1-0.3 mm

Schraubenbeschichtung: Fe/ZnNi 8A

Screw coating : Fe/ZnNi 8A

vorgeschlagenes
Montagedrehmoment: 6±0.5 Nm

Suggested
Tightening torque: 6±0.5 Nm



GENERAL TOLERANCE:	DIN 6930-2-m
FORM AND POS. TOL.:	DIN ISO 2768-2-K
DEVIATION FOR ANGLE:	-

Former Drawing No.: F 11 ABCZ

INDEX PART	DWG	QTY	REVISION SUMMARY				CHANGE-NO	DATE	DRAWN	CHECKED
-	-	-	-	-	-	-	-	-	-	
2	A	-	Created in Creo				01-614558	2018-10-25	Pawar	Schweigert
1	-	-	34/2006				-	2006-11-30	MV	-

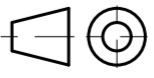
1st ANGLE PROJECTION	ACCORDING TO:	PART NAME:	
	SCALE: 2:1	Hose Clamp	
	DATE: YYYY-MM-DD	AERO BG	
	DRAWN: 2006-11-30		
	CHECKED: -		
PROJECT-NO.:	NORMA Germany GmbH	CUSTOMER:	CUSTOMER-NO.:
-	Postfach 1149	-	-
	63461 Maintal		
CAD-SYSTEM:	(C) COPYRIGHT NORMA GROUP	NORMA-NO.:	PART INDEX DWG TYPE FORMAT SHEET
Creo 3.0 M140	DIN ISO 16016	0362 0007 000	2 A Q A2 1/2
DRAWING-NAME.:	03620007000_0		

1 2 3 4 5 6 7 8 9 10

QUOTATION DRAWING

Pos.	Teilenummer Part no.	Spannbereichkennz Clamping range d-D	Benennung PART-NAME
1	0362 0007 017	BG 12 - 22	SCL-Aero BG 12-22/14.3 A/F8 W2
2	0362 0007 022	BG 16 - 27	SCL-Aero BG 16-27/14.3 A/F8 W2
3	0362 0007 026	BG 20 - 32	SCL-Aero BG 20-32/14.3 A/F8 W2
4	0362 0007 033	BG 25 - 40	SCL-Aero BG 25-40/14.3 A/F8 W2
5	0362 0007 038	BG 30 - 45	SCL-Aero BG 30-45/14.3 A/F8 W2
6	0362 0007 043	BG 35 - 50	SCL-Aero BG 35-50/14.3 A/F8 W2
7	0362 0007 050	BG 40 - 60	SCL-Aero BG 40-60/14.3 A/F8 W2
8	0362 0007 060	BG 50 - 70	SCL-Aero BG 50-70/14.3 A/F8 W2
9	0362 0007 070	BG 60 - 80	SCL-Aero BG 60-80/14.3 A/F8 W2
10	0362 0007 080	BG 70 - 90	SCL-Aero BG 70-90/14.3 A/F8 W2
11	0362 0007 090	BG 80 - 100	SCL-Aero BG 80-100/14.3 A/F8 W2
12	0362 0007 100	BG 90 - 110	SCL-Aero BG 90-110/14.3 A/F8 W2
13	0362 0007 110	BG 100 - 120	SCL-Aero BG 100-120/14.3 A/F8 W2
14	0362 0007 120	BG 110 - 130	SCL-Aero BG 110-130/14.3 A/F8 W2
15	0362 0007 130	BG 120 - 140	SCL-Aero BG 120-140/14.3 A/F8 W2
16	0362 0007 140	BG 130 - 150	SCL-Aero BG 130-150/14.3 A/F8 W2
17	0362 0007 150	BG 140 - 160	SCL-Aero BG 140-160/14.3 A/F8 W2
18	0362 0007 160	BG 150 - 170	SCL-Aero BG 150-170/14.3 A/F8 W2
19	0362 0007 170	BG 160 - 180	SCL-Aero BG 160-180/14.3 A/F8 W2
20	0362 0007 180	BG 170 - 190	SCL-Aero BG 170-190/14.3 A/F8 W2
21	0362 0007 190	BG 180 - 200	SCL-Aero BG 180-200/14.3 A/F8 W2
22	0362 0007 200	BG 190 - 210	SCL-Aero BG 190-210/14.3 A/F8 W2
23	0362 0007 210	BG 200 - 220	SCL-Aero BG 200-220/14.3 A/F8 W2
24	0362 0007 220	BG 210 - 230	SCL-Aero BG 210-230/14.3 A/F8 W2
25	0362 0007 230	BG 220 - 240	SCL-Aero BG 220-240/14.3 A/F8 W2
26	0362 0007 240	BG 230 - 250	SCL-Aero BG 230-250/14.3 A/F8 W2
27	0362 0007 250	BG 240 - 260	SCL-Aero BG 240-260/14.3 A/F8 W2
28	0362 0007 260	BG 250 - 270	SCL-Aero BG 250-270/14.3 A/F8 W2
29	0362 0007 270	BG 260 - 280	SCL-Aero BG 260-280/14.3 A/F8 W2
30	0362 0007 280	BG 270 - 290	SCL-Aero BG 270-290/14.3 A/F8 W2
31	0362 0007 290	BG 280 - 300	SCL-Aero BG 280-300/14.3 A/F8 W2
32	0362 0007 300	BG 290 - 310	SCL-Aero BG 290-310/14.3 A/F8 W2
33	0362 0007 310	BG 300 - 320	SCL-Aero BG 300-320/14.3 A/F8 W2
34	0362 0007 320	BG 310 - 330	SCL-Aero BG 310-330/14.3 A/F8 W2
35	0362 0007 330	BG 320 - 340	SCL-Aero BG 320-340/14.3 A/F8 W2
36	0362 0007 340	BG 330 - 350	SCL-Aero BG 330-350/14.3 A/F8 W2
37	0362 0007 350	BG 340 - 360	SCL-Aero BG 340-360/14.3 A/F8 W2
38	0362 0007 360	BG 350 - 370	SCL-Aero BG 350-370/14.3 A/F8 W2
39	0362 0007 370	BG 360 - 380	SCL-Aero BG 360-380/14.3 A/F8 W2
40	0362 0007 380	BG 370 - 390	SCL-Aero BG 370-390/14.3 A/F8 W2
41	0362 0007 390	BG 380 - 400	SCL-Aero BG 380-400/14.3 A/F8 W2
42	0362 0007 400	BG 390 - 410	SCL-Aero BG 390-410/14.3 A/F8 W2

ab hier unverschraubt
unscrewed from here
--> open condition

1st ANGLE PROJECTION 	ACCORDING TO: -		PART NAME: Hose Clamp AERO BG						
	SCALE: 1:1 MM	DATE: YYYY-MM-DD 2006-11-30	NAME Vaas						
PROJECT-NO.: -	NORMA Germany GmbH Postfach 1149 63461 Maintal		CUSTOMER: -		CUSTOMER-NO: -				
CAD-SYSTEM: Creo 3.0 M140	(C) COPYRIGHT NORMA GROUP DIN ISO 16016		NORMA-NO.: 0362 0007 000		PART 2	INDEX DWG A	TYPE Q	FORMAT A2	SHEET 2/2
DRAWING-NAME.: 03620007000_Q									